

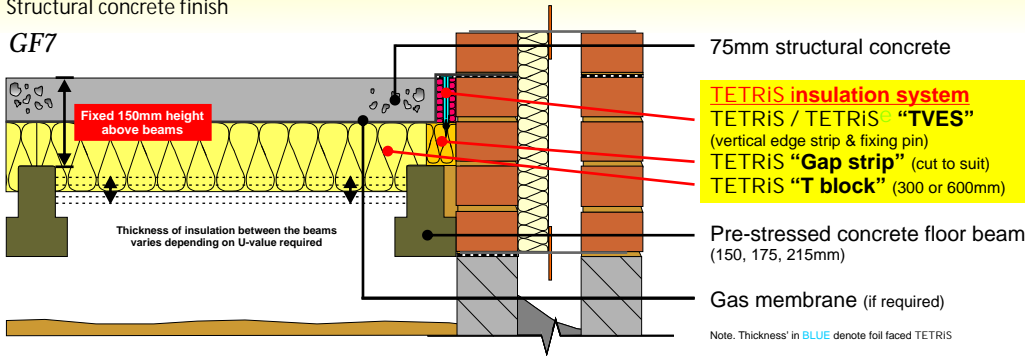
# Floor insulation: Suspended ground floors

## Beam and Insulated Block Suspended Ground Floor

Insulation blocks installed above and between pre-stressed concrete beams  
Structural concrete finish

**Patented System**

GF7



P/A ratio	Typical thickness of TETRIS req'd (mm)				
	90	120	140	120	140
0.7	90	120	140	120	140
0.6	90	120	140	120	140
0.5	90	120	140	100	120
0.4	90	100	120	100	120
0.3	90	90	90	120	90
	0.20	0.18	0.17	0.16	0.15

U-value (W/m<sup>2</sup>K)  
Calculated in accordance with ISO 13370

GWP value	Pol 1	
	TETRIS <sup>eco</sup>	TETRIS
<5	1	0
≥5	0	0

Note: Pol 1 Code credits have an approximate weighted value of 0.7

Green Guide rating	Mat 1	
	Element N°	820140051
A+	3	

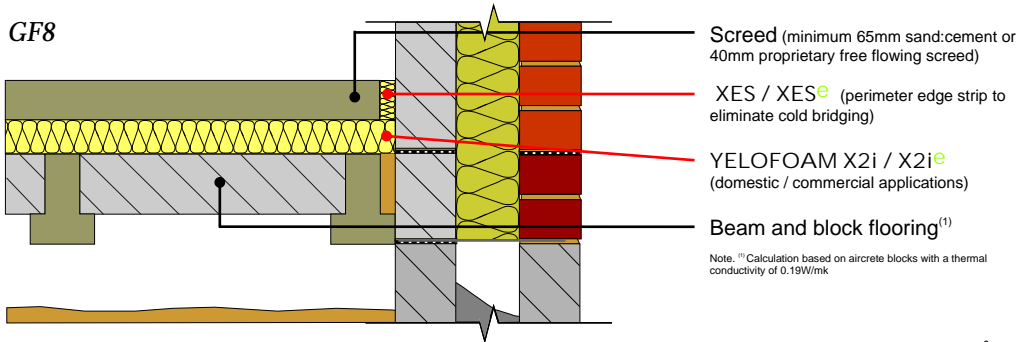
Note: Mat 1 Code credits have an approximate weighted value of 0.3

FASTRACKCAD<sup>®</sup>  
ARCHITECTURAL CAD DATABASES

## Suspended Beam and Block Ground Floor

Insulation installed below floating screed

GF8



P/A ratio	Typical thickness of X2i <sup>eco</sup> req'd (mm)				
	80	100	120	140	170
0.7	80	100	120	140	170
0.6	75	100	120	140	160
0.5	70	90	110	130	160
0.4	60	90	100	125	150
0.3	50	70	90	110	135
	0.25	0.22	0.20	0.18	0.16

U-value (W/m<sup>2</sup>K)  
Calculated in accordance with ISO 13370

GWP value	Pol 1	
	eco XPS boards	YELOFOAM XPS boards
<5	1	0
≥5	0	0

Note: Pol 1 Code credits have an approximate weighted value of 0.7

Green Guide rating	Mat 1	
	Element N°	820140014
B	1	

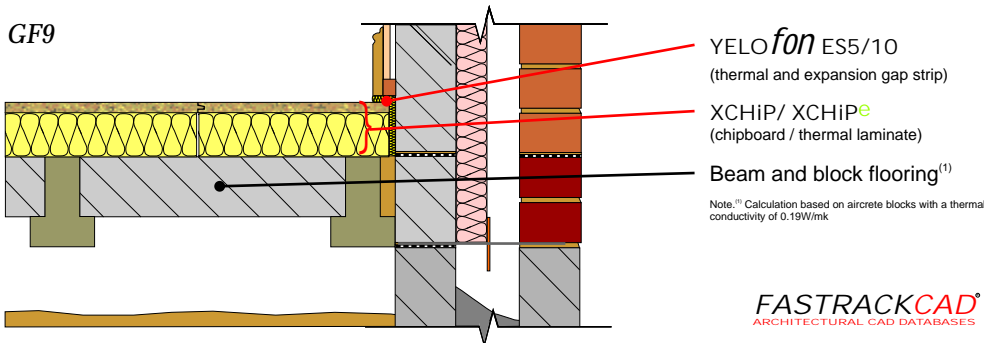
Note: Mat 1 Code credits have an approximate weighted value of 0.3

FASTRACKCAD<sup>®</sup>  
ARCHITECTURAL CAD DATABASES

## Suspended Beam and Block Ground Floor

Chipboard/thermal laminate floorboard

GF9



P/A ratio	Typical thickness of XCHiP req'd (mm)				
	88	108	138	138	178
0.7	88	108	138	138	178
0.6	88	108	118	138	158
0.5	78	98	118	138	158
0.4	68	88	108	138	158
0.3	58	78	98	118	138
	0.25	0.22	0.20	0.18	0.16

U-value (W/m<sup>2</sup>K)  
Calculated in accordance with ISO 13370

GWP value	Pol 1	
	XCHiP <sup>eco</sup>	XCHiP
<5	1	0
≥5	0	0

Note: Pol 1 Code credits have an approximate weighted value of 0.7

Green Guide rating	Mat 1	
	Element N°	820140019
A+	3	

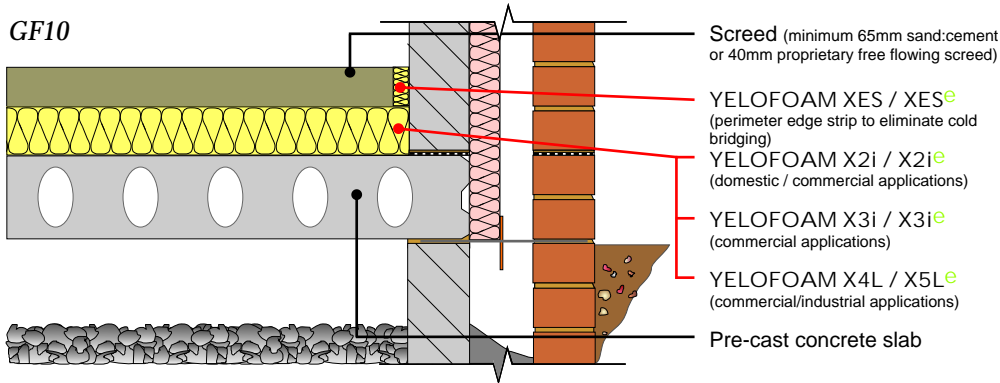
Note: Mat 1 Code credits have an approximate weighted value of 0.3

FASTRACKCAD<sup>®</sup>  
ARCHITECTURAL CAD DATABASES

# Floor insulation: Suspended ground floor

## Suspended Ground Floor - Pre-Cast Slab

Insulation installed below floating screed



P/A ratio	Typical thickness of X2i <sup>e</sup> req'd (mm)				
	0.7	100	120	140	160
0.6	90	120	130	150	175
0.5	90	110	125	150	170
0.4	75	100	120	140	165
0.3	65	90	110	130	160
	0.25	0.22	0.20	0.18	0.16

U-value (W/m<sup>2</sup>K)  
Calculated in accordance with ISO 15370

	Pol 1	
	eco XPS boards	YELOFOAM XPS boards
GWP value	<5	≥5
Code credits	1	0

Note. Pol1 Code credits have an approximate weighted value of 0.7

Mat 1	
Element N°	820140012
Green Guide rating	C
Code credits	0.5

Note. Mat. 1 Code credits have an approximate weighted value of 0.3

FASTRACKCAD<sup>®</sup>  
 ARCHITECTURAL CAD DATABASES